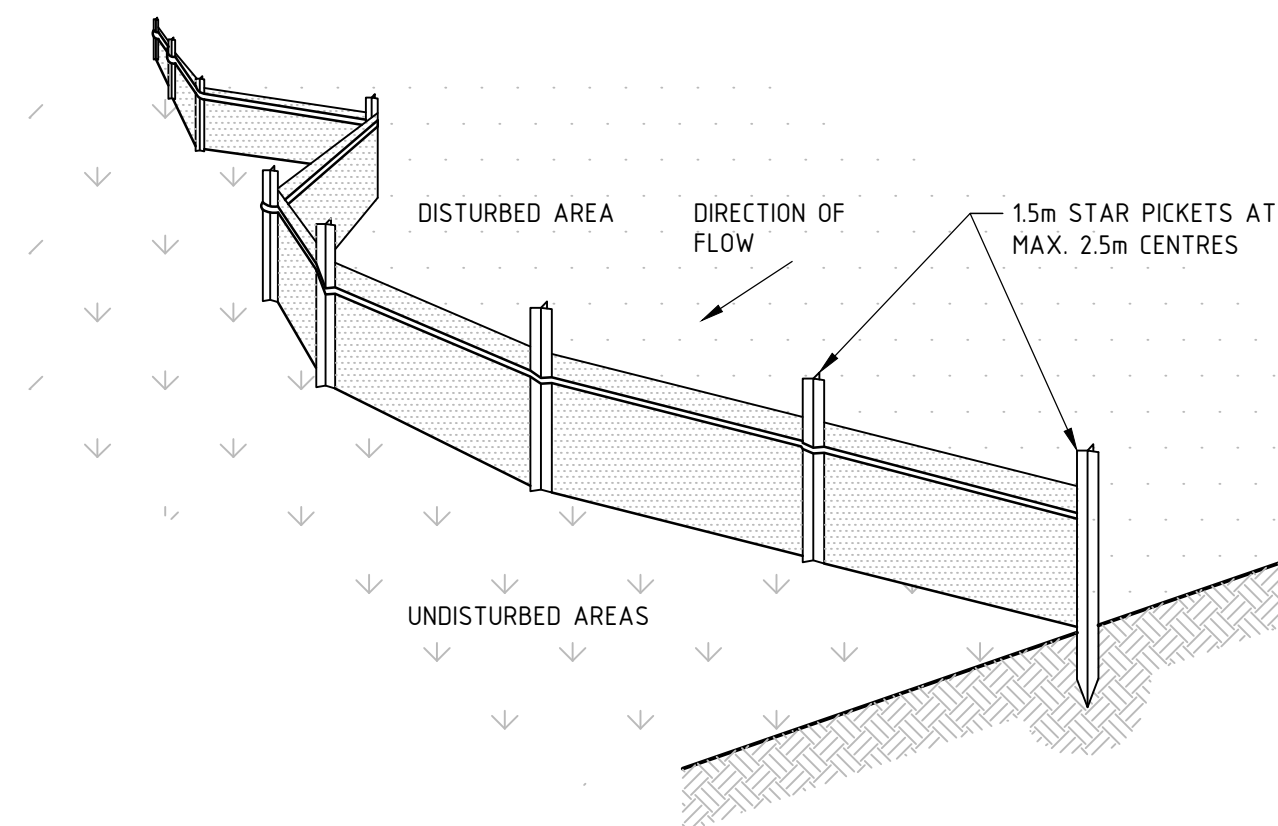
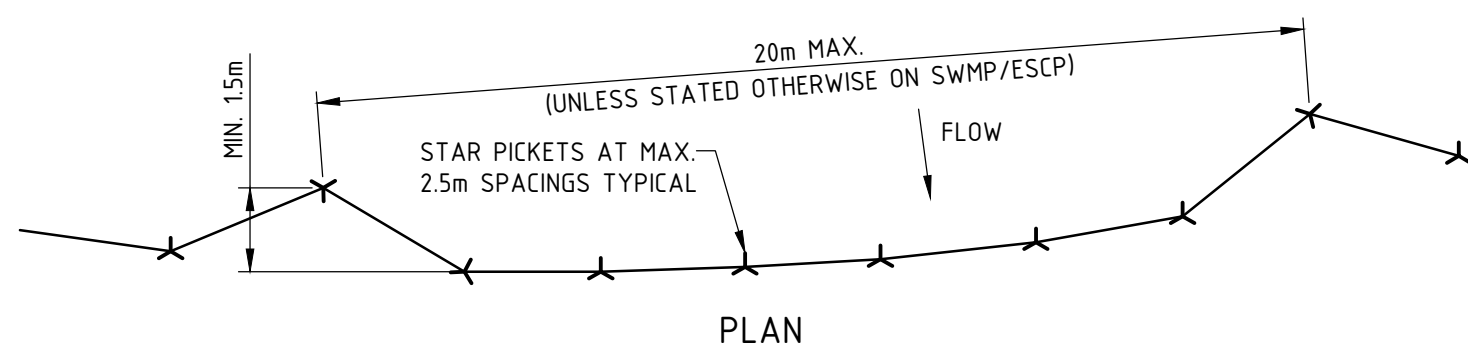
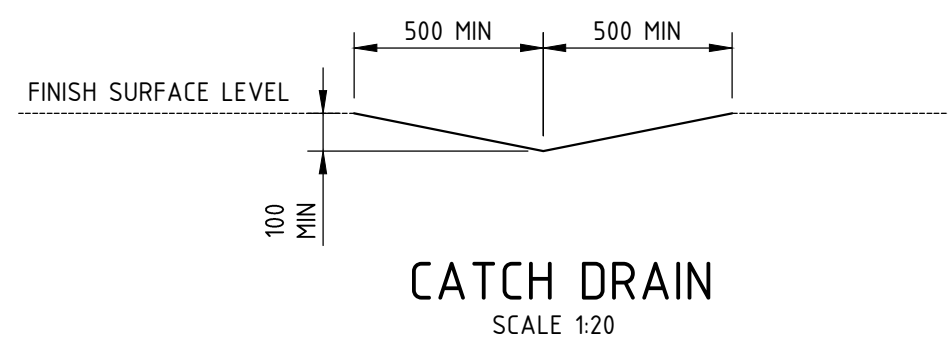


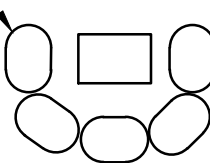
SECTION DETAIL



SEDIMENT FENCE
SCALE N.T.S.



SAND BAG SEDIMENT TRAP
AT ALL EXISTING PITS SEE DETAIL



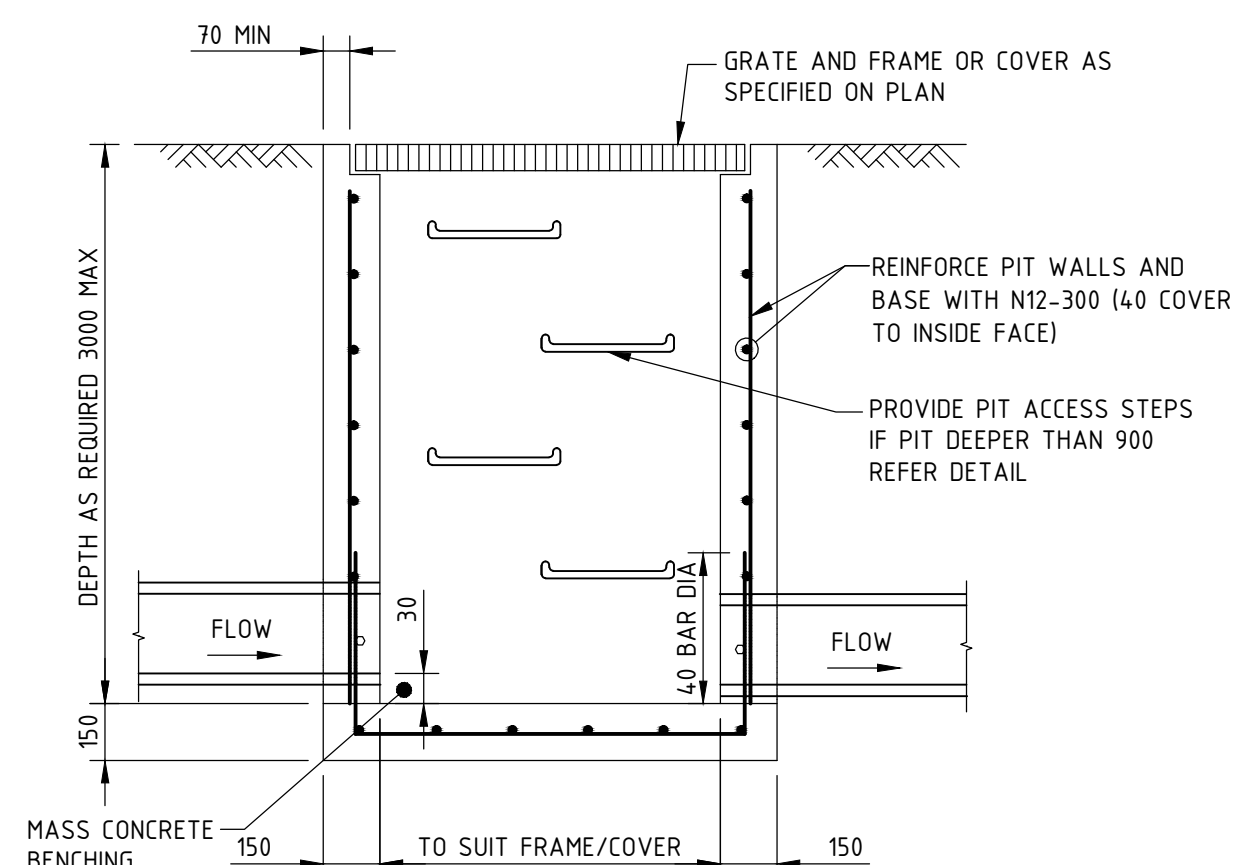
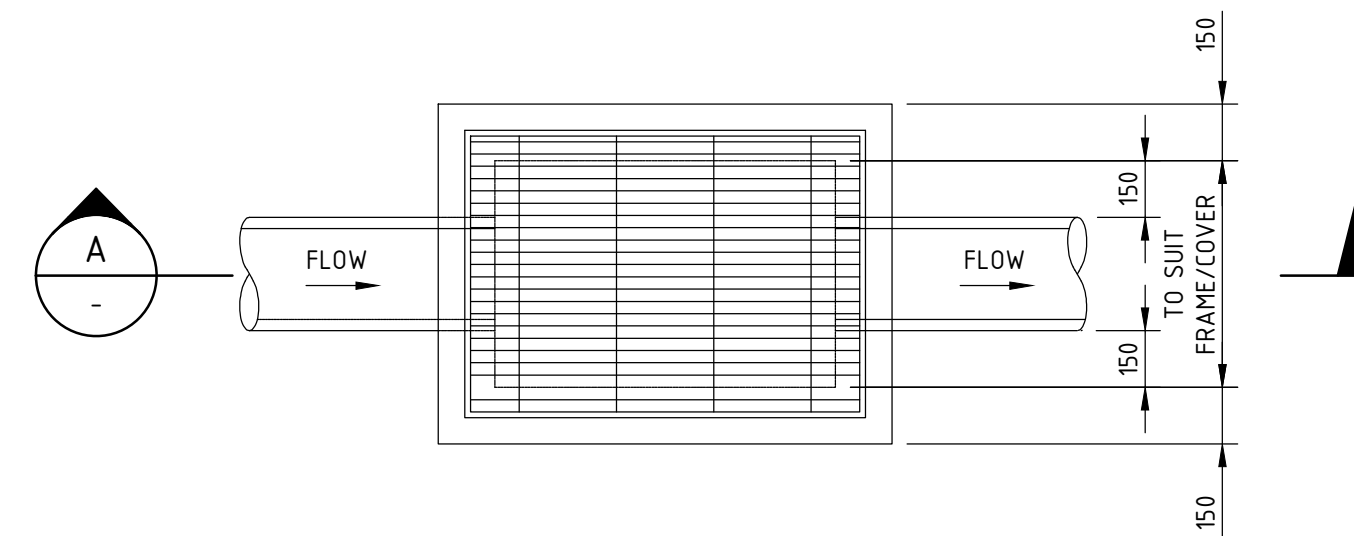
ENSURE SANDBAGS SURROUND
PIT INLET



SANDBAG PIT SURROUND
N.T.S.

SEDIMENT FENCE CONSTRUCTION NOTES:



- CONSTRUCT SEDIMENT FENCES AS CLOSE AS POSSIBLE TO BEING PARALLEL TO THE CONTOURS OF THE SITE, BUT WITH SMALL RETURNS AS SHOWN IN THE DRAWING TO LIMIT THE CATCHMENT AREA OF ANY ONE SECTION. THE CATCHMENT AREA SHOULD BE SMALL ENOUGH TO LIMIT WATER FLOW IF CONCENTRATED AT ONE POINT TO 50 LITRES PER SECOND IN THE DESIGN STORM EVENT, USUALLY THE 10-YEAR EVENT.
- CUT A 150mm DEEP TRENCH ALONG THE UPSLOPE LINE OF THE FENCE FOR THE BOTTOM OF THE FABRIC TO BE ENTRENCHED.
- DRIVE 1.5m LONG STAR PICKETS INTO GROUND AT 2.5m INTERVALS (MAX.) AT THE DOWNSLOPE EDGE OF THE TRENCH. ENSURE ANY STAR PICKETS ARE FITTED WITH SAFETY CAPS.
- FIX SELF-SUPPORTING GEOTEXTILE TO THE UPSLOPE SIDE OF THE POSTS ENSURING IT GOES TO THE BASE OF THE TRENCH. FIX THE GEOTEXTILE WITH WIRE TIES OR AS RECOMMENDED BY THE MANUFACTURER. ONLY USE GEOTEXTILE SPECIFICALLY PRODUCED FOR SEDIMENT FENCING. THE USE OF SHADE CLOTH FOR THIS PURPOSE IS NOT SATISFACTORY.
- JOIN SECTIONS OF FABRIC AT A SUPPORT POST WITH A 150mm OVERLAP.
- BACKFILL THE TRENCH OVER THE BASE OF THE FABRIC AND COMPACT IT THOROUGHLY OVER THE GEOTEXTILE.



SECTION A

SCALE 1:20

PIT DETAIL

C	26.11.12	ISSUED FOR DA		TB
B	16.11.12	ISSUED FOR DA		TB
A	07.06.12	ISSUED FOR INFORMATION		CB
REV	DATE	DESCRIPTION		RVD
REVISIONS				
CLIENT				
 ABBOTSLEIGH				
Sydney Office— L2 8 Windmill St Sydney NSW 2000 P/+61 2 9770 3300 E/info@bg&e.com bg&e.com—				
PROJECT				
ABBOTSLEIGH MPSH, CARPARK AND SPORTS FIELD				
STATUS				
PRELIMINARY NOT TO BE USED FOR CONSTRUCTION				
DRAWN CB	DESIGNED TH	CHECKED TH	APPROVED	
DATUM AHD	GRID	SCALE 1:100 1:20	AT A1 SIZE	
TITLE				
SECTION AND DETAILS SHEET				
PROJECT No. S12034		DRAWING No. C-0004		REV. C